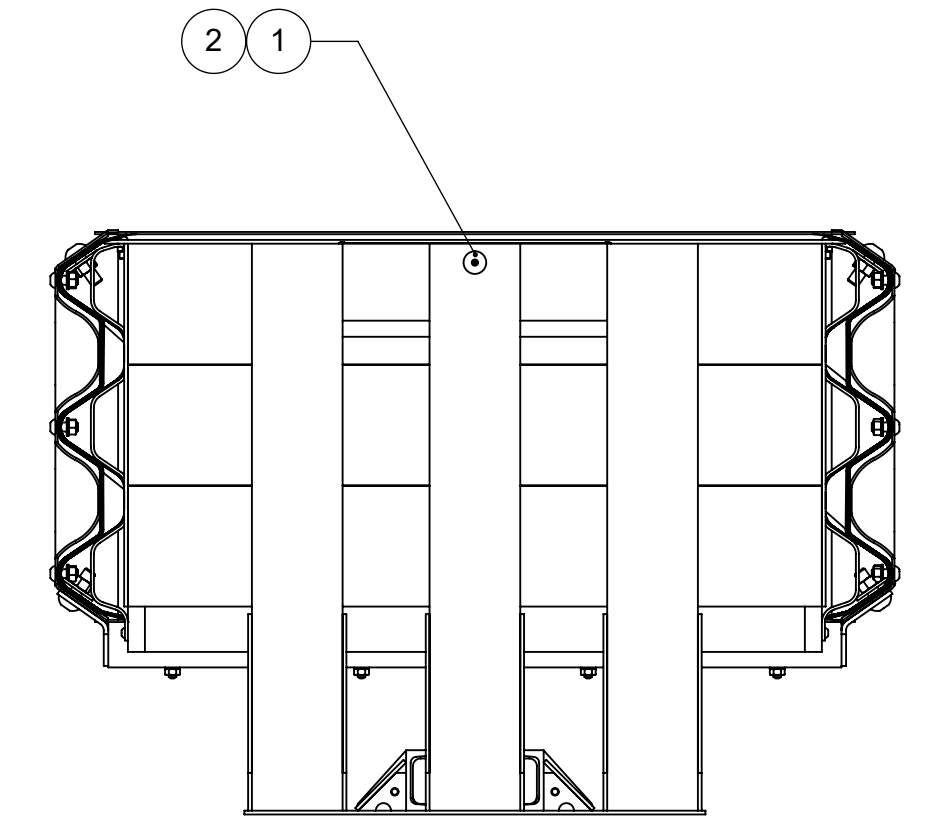
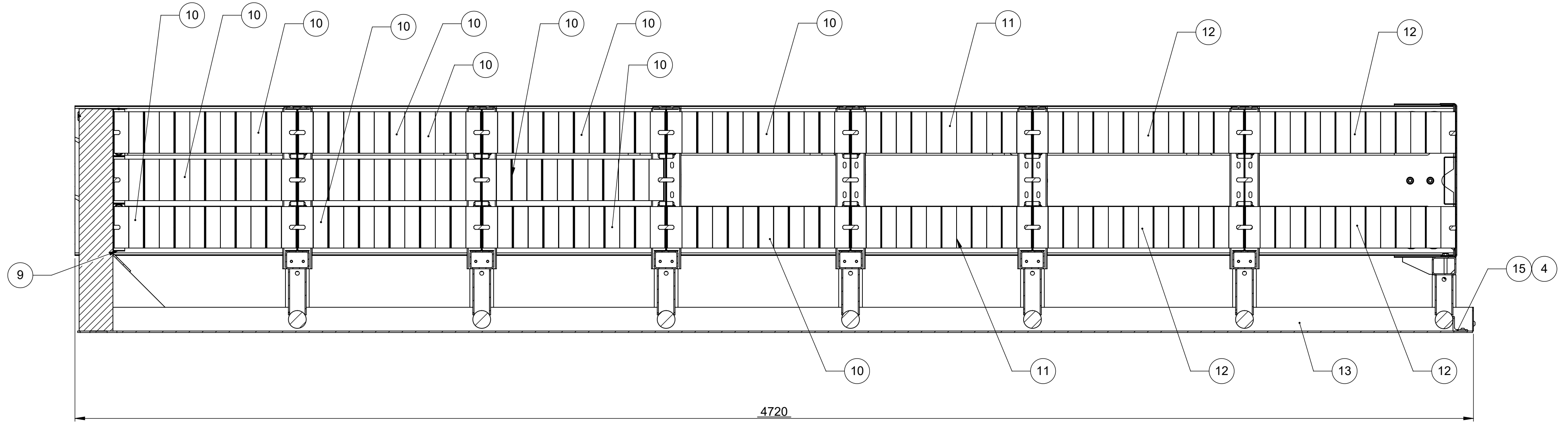
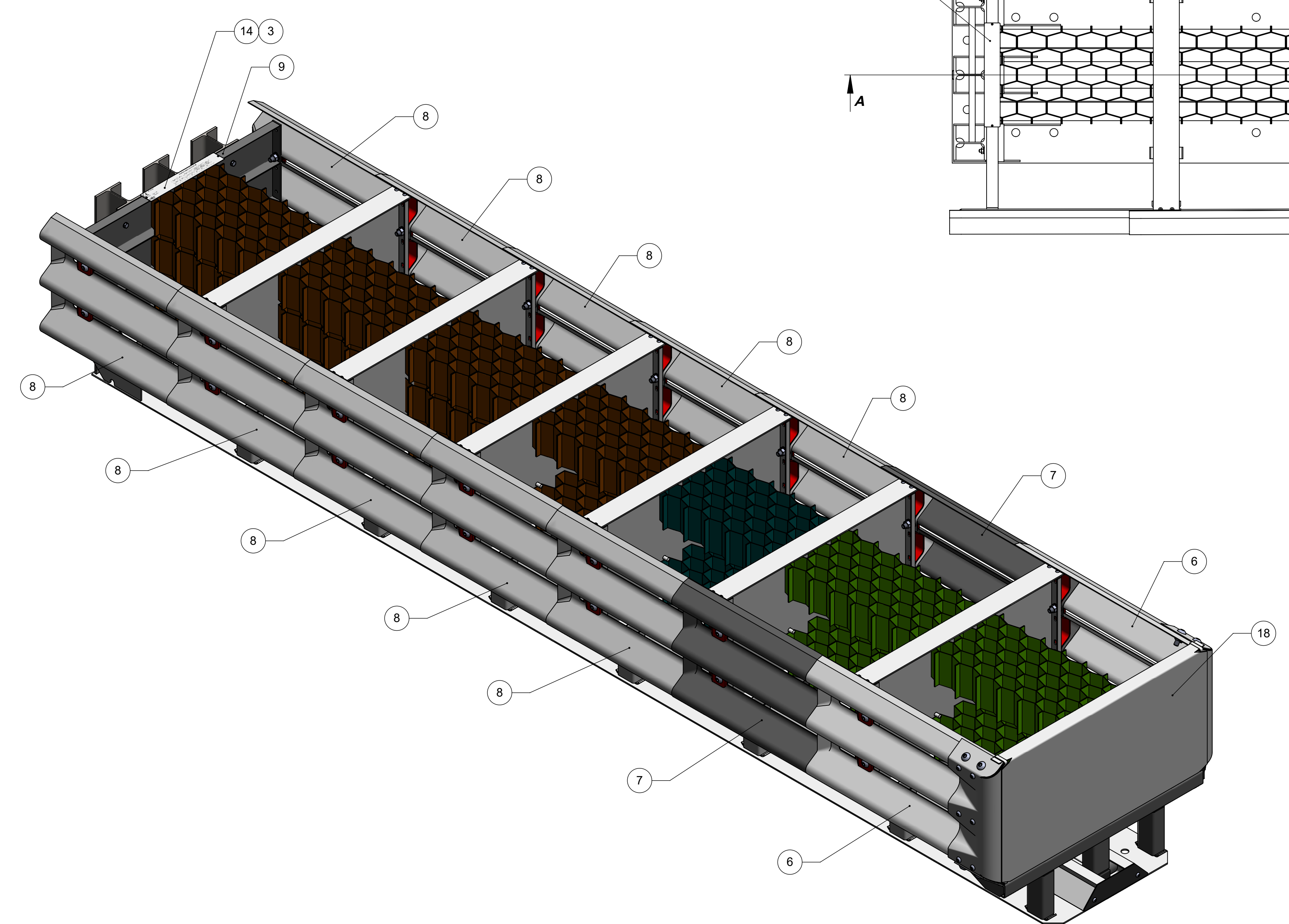
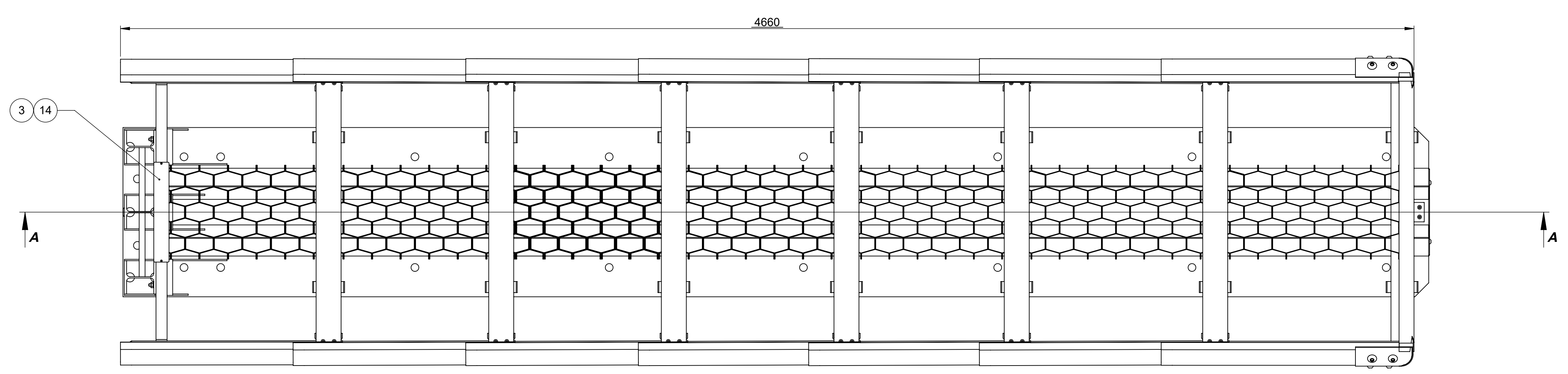
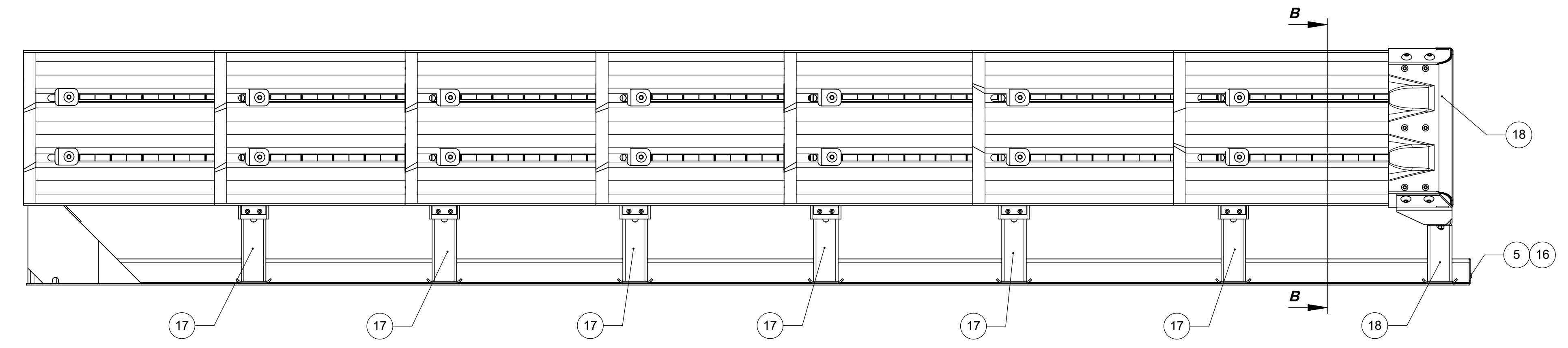
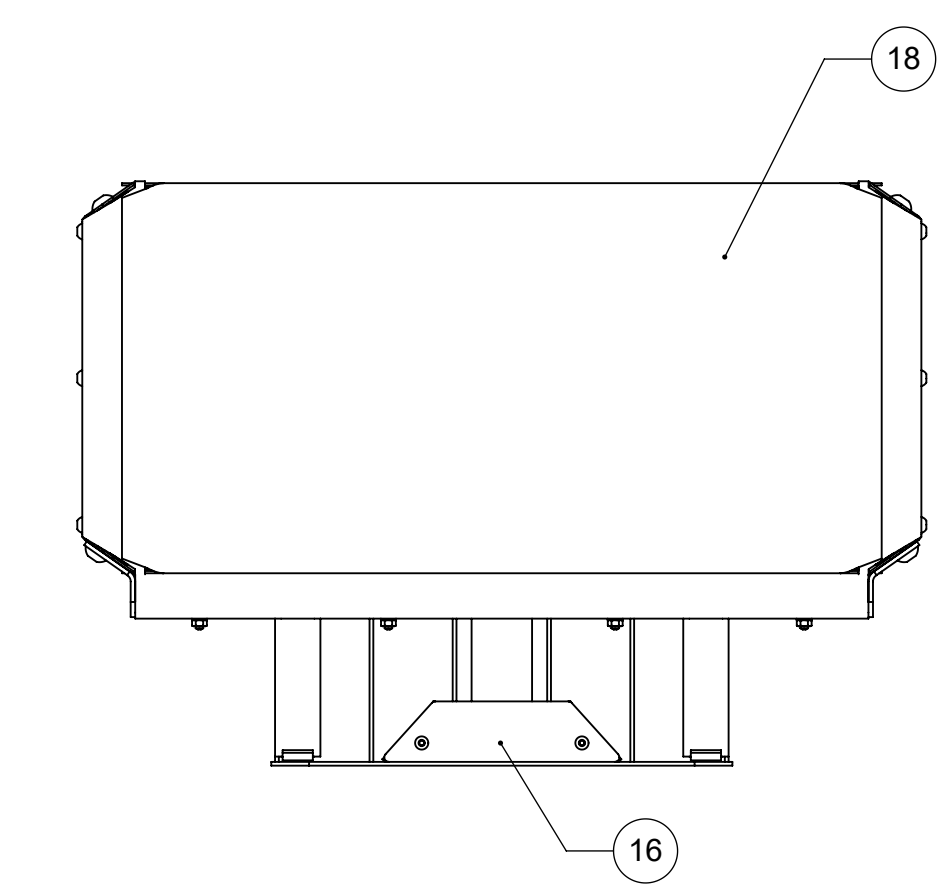
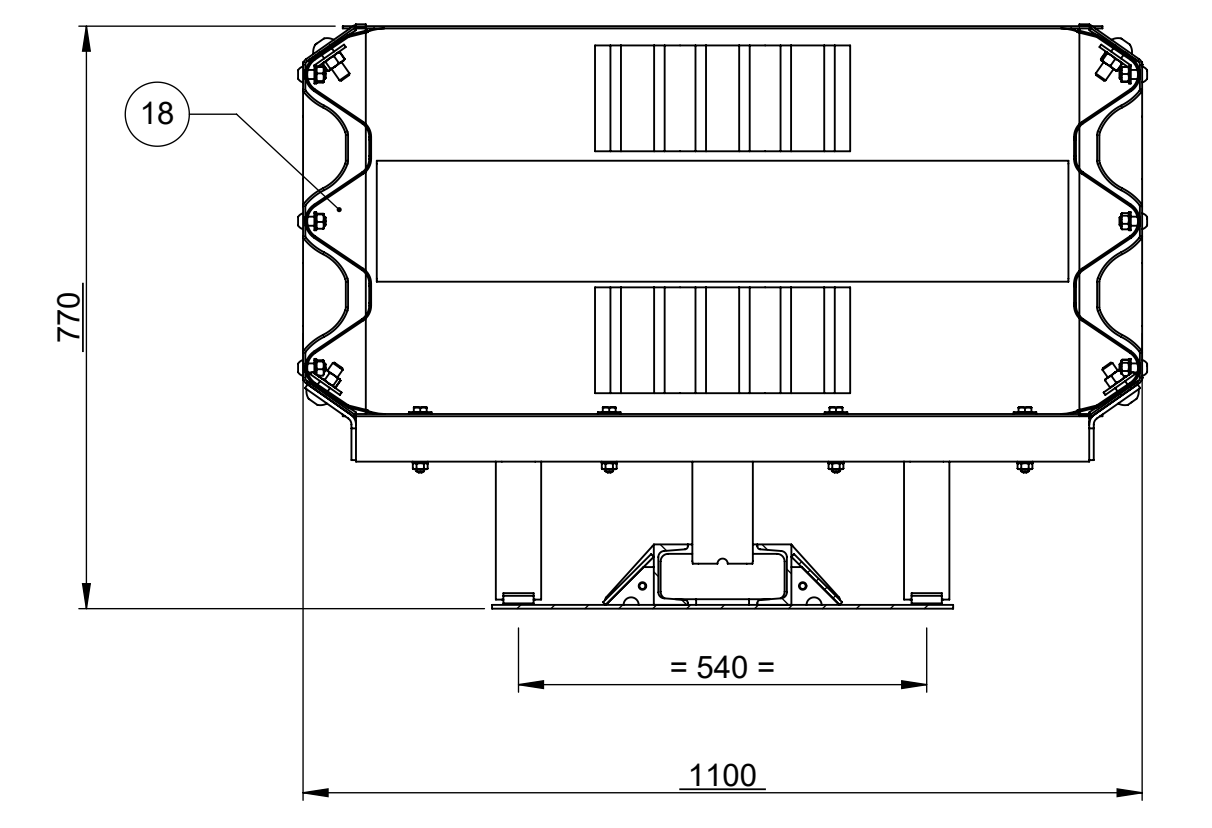


BURNISHING	ELECTROLYTIC GALV.	HOT DIP GALVANISING	NICKEL PLATING COATING	CHEMICAL NICKEL PLATING
TEMPERING	REDUCTION QUENCHING	SIL QUENCHING	CEMENTATION	
TRATTAMENTI SUPERFICIALI O TERMICI				
RAL 9010 - WHITE	RAL 2004 - ORANGE	RAL 1000 - ALUMINIUM	RAL 6017 - GREEN	RAL 8011 - BROWN
RAL 1021 - YELLOW	RAL 1027 - BLUE	RAL 9011 - BLACK	RAL 1023/1024/1025 - BLACK	
VENNICIATURA				

SEZIONE A-A



SEZIONE B-B



Pos.	Q.ty	Description	Dimension	Length	ID
18	1	Bumper with sliding bar			D5250200
17	6	Intermediate panel with bolts			D5250100
16	1	Sheet for closure guide			D4430302
15	1	Support angular			D4230508
14	1	ICE SMA 100 P-Plate			D4237015
13	1	Base for SMA 100 P (concrete)			D4237001-11
12	4	Cells 3x7 Fe600 Sp. 1.8 with plate			D4173049
11	2	Cells 3x6 Fe600 sp.2 with plate			D4173048
10	1	Cells 3x6 with plate			D4173047
9	1	Final panel with bolts			D4215000
8	10	Triple wave barrier panel			D4015018
7	2	Second triple wave barrier panel			D4015017
6	2	First triple wave barrier panel			D4015016
5	2	HEX SOCKET BUTTON HEAD SCREW UNI EN ISO 7380 PG 10.9 ZL	M10x20		3000019164
4	2	HEX SOCKET BUTTON HEAD SCREW UNI EN ISO 7380 PG 10.9 ZL	M8x10		3000019145
3	2	BLIND RIVET UNI 8200 C15 ZB			3000019142
2	1	TSEI SCREWS UNI 8933 10.9 A2			3000019147
1	1	TAG NTAG219 Norm. - Type: N581 Mat. -			3000019239

Aut.	Rev.	Descr.	Descr.	Descr.	Descr.	Descr.	Descr.	Descr.	Descr.
B	1	Raffaele Ronca	23/07/2018	Raffaele Ronca	SOSTITUZIONE CELLE GREEN CON BROWN TERZO GRUPPO				
C	1	Raffaele Ronca	09/08/2018	Raffaele Ronca	Aggiornato esponente di revisione per modifica sottobassi				
-	1	Antonio Bucchi	31/07/2017	Antonio Bucchi					

CONSTRUCTION STANDARD	DESCRIPTION	WEIGHT	UNIT
Crash Cushion	SMA - Safety Modular Absorber	KG	1058.52
SMA 100 P-L			
Crash Cushion SMA 100 P-L			1:10
Crash Cushion SMA 100 P-L			1:2

INDUSTRIA AUTOMAZIONE
 33042 TREVISO (TV) - VIA S. GIUSEPPE 10
 TEL. 0422/431111 - FAX 0422/431112
 WWW.AMS.IT

NOT QUOTED DIMENSION: R 1
 NOT QUOTED RADIUS: R 1
 TOLERANCES ISO 8013: UNLESS OTHERWISE SPECIFIED
 DIMENSIONS IN MILLIMETERS UNLESS OTHERWISE SPECIFIED
 DRAWING BY CAD 3D

INDUSTRIA AUTOMAZIONE
 33042 TREVISO (TV) - VIA S. GIUSEPPE 10
 TEL. 0422/431111 - FAX 0422/431112
 WWW.AMS.IT

D55310000

